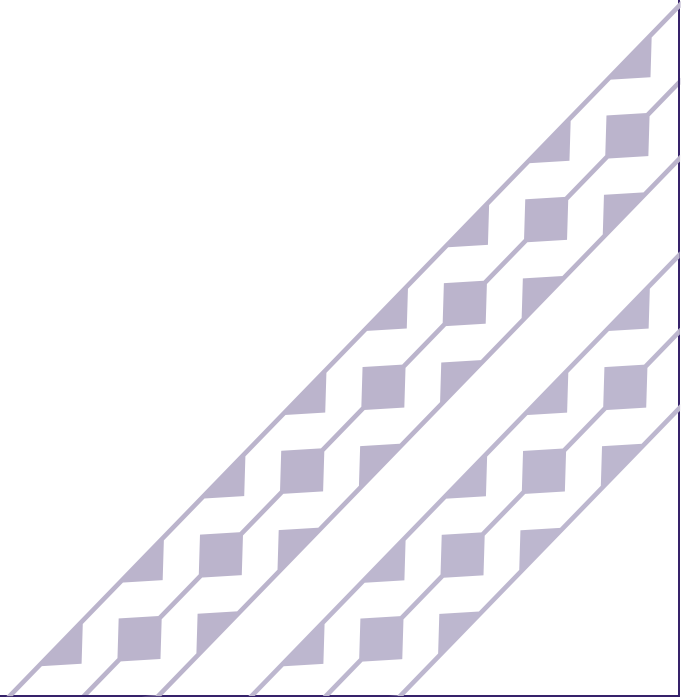
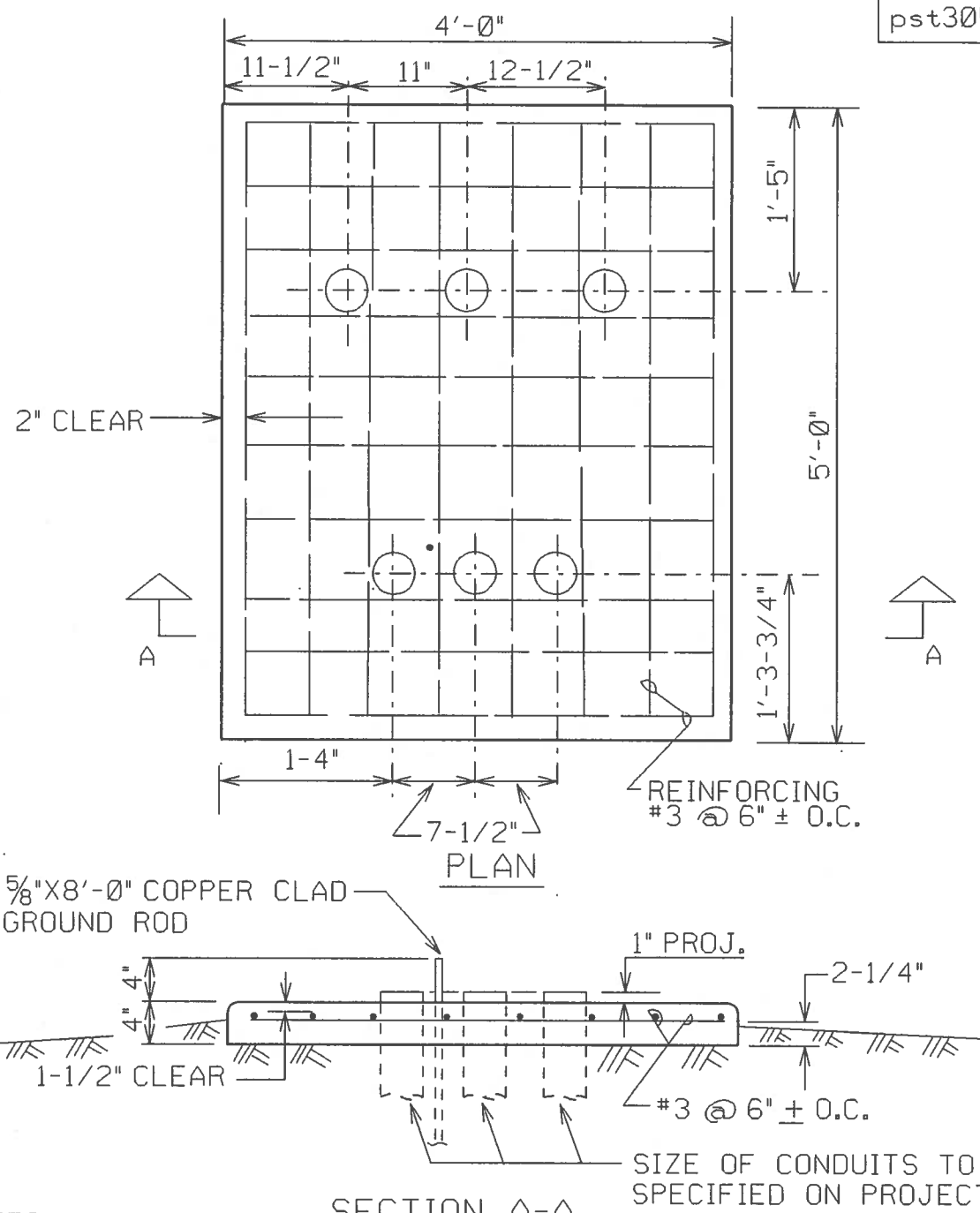


**Hawaiian
Electric**

The information found in this document are general guidelines that may be used to aid in the preparation of your service request proposal. Please be advised that depending on the specific needs and actual conditions of your project, Hawaiian Electric may require your design to comply with different specifications including specifications that include more stringent requirements than those included in these design specification guidelines. For further guidance and clarification on the actual specifications that will apply to your particular project, please refer to instructions issued by Hawaiian Electric's Planner or Engineer who is assigned to your particular (Project/Review Request/...). Additionally, please be advised that Hawaiian Electric reserves the right to require additional modifications to any approved design if it is determined during actual construction that additional modifications must be made to address certain field conditions that were not detected or Hawaiian Electric was unaware of during the design review process.





NOTES:

1. CONCRETE
 - a) COMPRESSION: 3000 PSI IN 28 DAYS.
 - b) REINFORCING: CLEAN AND NEW ROUND DEFORMED BARS.
2. CONSTRUCTION TO COMPLY WITH ACI 318 AS AMENDED.
3. PAD TO BE SET ON FIRM UNDISTURBED GROUND OR COMPACTED FILL.
4. TOP OF CONCRETE PAD TO BE SMOOTH AND TRUE AND FREE FROM DEFECTS. SIDEWALK FINISH AS PER C&C SPECIFICATIONS. ROUND ALL EXPOSED EDGES TO 3/8" RADIUS.
5. IF THE GROUND RESISTANCE IS MORE THAN 25 OHMS, INSTALL ADDITIONAL GROUND ROD OR GROUND WIRE.

DATE INITIAL
REVISION

DRAWN *MM* DESIGNED *MM* APPD *JK* *RVUM* REDRAWN

SUPERSEDES

CONCRETE PAD INSTALLATION
25 KV PMH-3 SWITCH ENCLOSURE
UG DUCTS AND STRUCTURES

ORIGINAL 08-92
30-5512 REV 0
SHEET