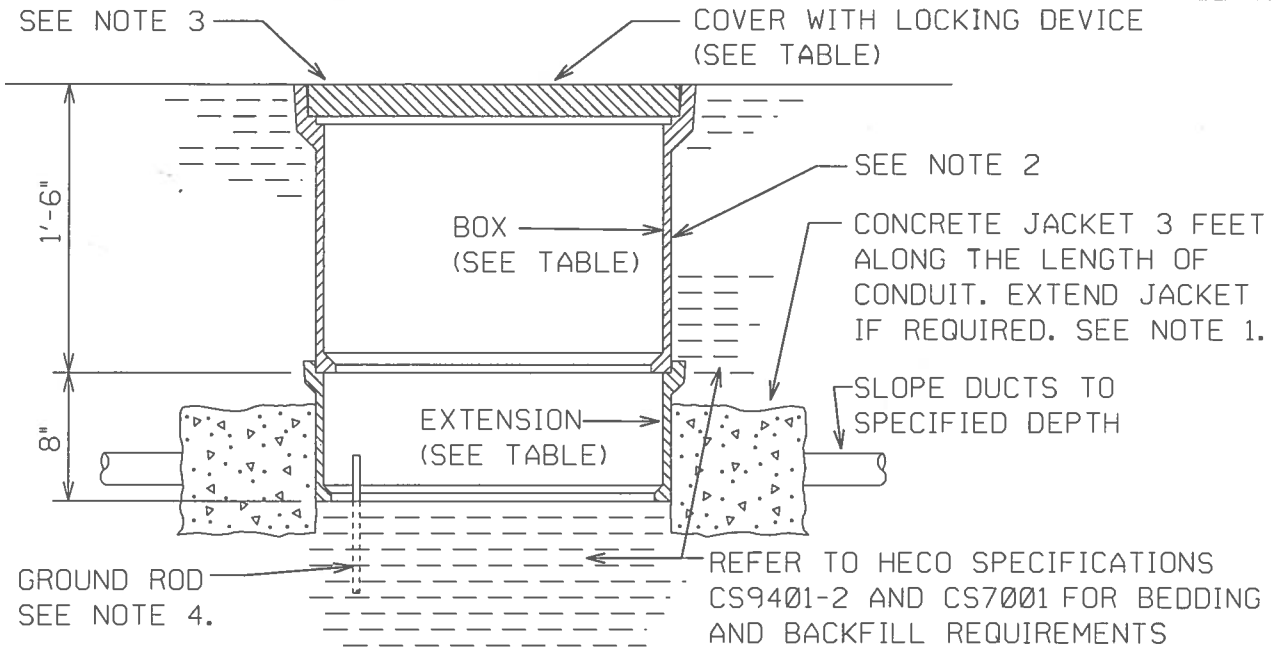




**Hawaiian
Electric**

The information found in this document are general guidelines that may be used to aid in the preparation of your service request proposal. Please be advised that depending on the specific needs and actual conditions of your project, Hawaiian Electric may require your design to comply with different specifications including specifications that include more stringent requirements than those included in these design specification guidelines. For further guidance and clarification on the actual specifications that will apply to your particular project, please refer to instructions issued by Hawaiian Electric's Planner or Engineer who is assigned to your particular (Project/Review Request/...). Additionally, please be advised that Hawaiian Electric reserves the right to require additional modifications to any approved design if it is determined during actual construction that additional modifications must be made to address certain field conditions that were not detected or Hawaiian Electric was unaware of during the design review process.





DESCRIPTION	MIMS STOCK CODE/PART NO.
13"X24"X18" BOX WITH COVER	000116624/11317
8" EXTENSION (13"X24")	000186240/---
17"X30"X18" BOX WITH COVER	000116608/11315
8" EXTENSION (17"X30")	000186244/---
24"X36"X18" BOX WITH COVER	000116582/11314
8" EXTENSION (24"X36")	000186249/---

(SEE MATERIAL STANDARD DRAWING 011314 FOR DETAILS.)

NOTES:

1. REFER TO SPECIFICATION CS-7001 (CONSTRUCTION OF STANDARD UNDERGROUND FACILITIES) AND THE CONDUIT APPLICATION GUIDE (STD. 30-1005) FOR CONSTRUCTION DETAILS. JACKET THICKNESS 3".
2. REFER TO "UG BOXES APPLICATIONS GUIDE" FOR PROPER APPLICATION OF SERVICE BOX WITH TYPE AND SIZE OF CABLE. (STD. 30-2000)
3. TO PROPERLY SECURE THE COVER, BE SURE THAT THE PENTAHEAD BOLTS ARE IN PLACE AND TIGHTENED. THE PENTA BOLTS SHALL BE FASTENED SECURELY TO THE COVERS (BY MEANS OF A COTTER PIN, FOR EXAMPLE), SO THE BOLTS CANNOT BE EASILY REMOVED FROM THE COVERS, EVEN WHEN THE COVERS ARE REMOVED FROM THE BOXES.
4. A 5/8" DIAMETER X 8'-0" COPPER-CLAD STEEL GROUND ROD SHALL BE FURNISHED BY HECO AND INSTALLED BY THE CONTRACTOR WHENEVER SPECIFIED. THE ROD SHALL BE INSTALLED IN THE CORNER, 6" FROM EACH WALL AND 6" ABOVE FINAL FLOOR GRADE.
5. NON-CONCRETE BOXES SHALL BE IN ACCORDANCE WITH HECO SPECIFICATION M7702. ALL COVERS, BOX AND EXTENSIONS SHALL BE RATED FOR A VERTICAL LOAD OF 10,400 lbs (10K) MINIMUM. UNDER SPECIAL CASES, 20,000 lbs (20K) RATED COVERS MAY BE REQUIRED.

REVISION
 DATE INITIAL
 9-2-83 RM TN
 9-10-84 RM TN
 10-23-89 RM FK
 7-26-91 RM FK
 10-31-99 CT DH FK
 11-16-00 C/BH/JK

DRAWN CT	DESIGNED RM	APPD TN	VEC	REDRAWN OCT 1999	
SUPERSEDES				ORIGINAL JULY 1978	
ENGINEERING STANDARD HAWAIIAN ELECTRIC CO. INC.				30-2006	REV 6
				SHEET 1 OF 1	

24" x 36" NON-CONCRETE
 SERVICE BOX
 INSTALLATION DETAILS